

**Baby**  **System**<sup>®</sup>

# Graf's Method 2025 range of products

# Baby System®

## Filtras Washable Diaper *Giò* all in one

*For parents (no medical specialty required)*

The **Filtras diaper** is the washable diaper preferred by mothers for its practicality and functionality. The "all in one" concept makes it immediately ready for use like normal disposable diapers. In fact, being equipped with a waterproof outer layer, it does not require additional linings. The washable diaper is easy to put on and take off, thanks to its extreme wearability, the easily adjustable velcro fastening system and the soft elastic bands around the legs. With one or more removable absorbent bands inside, which are easily washed and dried, the washable diaper is the ideal solution for those looking for an "uncomplicated" diaper.



### Materials Used

The **Filtras Washable Diaper** is made with extremely functional materials, such as the natural cotton sponge with strong absorbent capabilities, the Filtras which, by letting humidity pass and at the same time preventing biological fluids from coming back, prevents the creation of hot-humid microclimatic conditions, and finally the Silk Effect layer capable of avoiding skin allergies and inflammation, given that it is free of perfumed or coloured substances, and of superabsorbent chemical products with unknown effects.



### Practical Advantages

The **Filtras Washable Diapers** can be replaced with a simple change operation and do not form creases. The Velcro closure offers maximum safety and can be adjusted in width at the waist. The Filtras system offers maximum comfort and wearability, it is always in place and does not hinder the freedom of movement of the child in the slightest.

## Washable Diapers

### Health Benefits

- Disposable diapers, covered with a plastic film, prevent the normal transpiration of the skin and increase the temperature of the genitals by 1 °C : this is potentially harmful especially for males, whose testicles are in the scrotum precisely to remain at a lower temperature than the abdominal one. The use of washable diapers or disposable diapers does not change the risk of developing diaper rash, but specific dermatitis of disposable diapers has appeared, due to the dyes and chemical components contained therein.
- Washable diapers maintain the physiological spread position of the hips better.
- Washable diapers prevent the sensation of a "dry bottom". This allows the child to associate the sensation of wetness with peeing, promoting control of physiological functions and early abandonment of the diaper.



### What Doctors Say

Since the ***Filtras Washable Diaper*** is made according to rigorous principles of postural hygiene linked to paediatric orthopaedics, and since it is important that it remains wide between the legs, it promotes early correction of insufficient hip divarication. Furthermore, the child's tendency to squeeze the interposed fabric with his thighs favors the development of the muscles, with obvious advantages for when it is time to take his first steps.

### Additional Information

- Product code 1a Washable Diaper FILTRAS - size 1
- Product code 2a Washable Diaper FILTRAS - size 2
- Product code 3a Washable Diaper FILTRAS - size 3
- Product code 4a Washable Diaper FILTRAS - size 4

[CHECK PRICE ON LINE](#)

# Baby System<sup>®</sup>

## Prevention of the developmental dysplasia of the hip

**Medical specialty : neonatology/pediatrics - Purpose : prevention of DDH at birth**

The Baby System **Soft Nappy** is the most effective alternative to the so-called "double nappy". It's an ideal preventive appliance and if used in the early days of life it will help the physiological posture of the newborn's lower limbs, as it stimulates the normal morphological hip development.



[CHECK PRICE ON LINE](#)

### Additional Information

- Product code 202A Soft Nappy (premature babies)
- Product code 202 Soft Nappy (6-7 kgs babies)
- Classification Graf Method : Type IIa(-)

**Medical specialty : pediatrics/orthopaedics - orthopedic consultation required - Purpose : treatment Type IIa(-) and IIb**

The Baby System **Corrective Nappy** promotes a prompt and easy separation of a baby's limbs while they are still developing. It also encourages correct maturation at the hip joint even when a late ossification is detected.



[CHECK PRICE ON LINE](#)

### Additional Information

- Product code 301 Corrective Nappy - size 1
- Product code 302 Corrective Nappy - size 2
- Product code 303 Corrective Nappy - size 3
- Classification Graf Method : Type IIa(-) and IIb



# Baby System<sup>®</sup>

## Prevention of the developmental dysplasia of the hip

**Medical specialty : pediatrics/orthopaedics ; orthopedic consultation required - Purpose : treatment Type IIc**

The Baby System **Corrective Salopette** is the most effective and safe alternative to traditional therapies in treating hip dysplasia and dislocation during the first months of life of a newborn child.

### Additional Information

- Product code 400 Corrective Salopette - size 0
- Product code 401 Corrective Salopette - size 1
- Product code 402 Corrective Salopette - size 2
- Product code 403 Corrective Salopette - size 3
- Classification Graf Method : Type IIc



[CHECK PRICE ON LINE](#)

**Medical specialty : pediatrics/orthopaedics ; orthopedic consultation required - Purpose : treatment Type IIa(-), IIb and IIc**

The Baby System **Dynamic Harness** is an appliance to extend and separate a baby's legs. It is ideal for serious cases of hip dysplasia (critical hips) and when the hips are not dislocated.

### Additional Information

- Product code 600 Dynamic Harness - size 0
- Product code 601 Dynamic Harness - size 1
- Product code 602 Dynamic Harness - size 2
- Classification Graf Method : Type IIa(-), IIb and IIc



[CHECK PRICE ONLINE](#)

# Baby System<sup>®</sup>

## Portable Graf's cradle

**Ultrasound Positioning Device with arm guide for ultrasound probes - Medical speciality : medical sonographer/doctors (orthopedists, pediatricians)/nurses**

The Portable Graf's Cradle is a lighter version of Graf's Cradle product code 5003. The new version of the cradle is smaller and lighter and easy to transport but still allows the scan of new born hip with the same efficiency. It includes the positioning device for holding and positioning the newborn and the arm guide for the ultrasound scan probe. The arm guide can be positioned with a magnet (and secured with screws) on the right or left side of the positioning device depending on operator requirements. The portable Graf's Cradle is made with same quality products and attention to newborn safety and operators professional requirements.



### Additional Information

- Product code 5002 - HS 94029000 - size 44x38x22 cms - weight 4.8 KGS
- Alternative product : *Graf's cradle product code 5003*

[CHECK PRICE ON LINE](#)

# Baby System<sup>®</sup>

## Graf's cradle (Rapid-Eco and Eco-Support)

**Ultrasound Positioning Device with arm guide for ultrasound probes - Medical speciality : medical sonographer/doctors (orthopedists, pediatricians)/nurses**

**Rapid-Eco** is the ultrasound positioning device which is designed to hold and position a newborn baby quickly and efficiently for a scan. On this piece of equipment the newborn is kept firmly still and in the correct position without needing the assistance of a third person, this is because the pressure from both sides of the equipment blocks the movement of the baby with a pressure which is in proportion to the baby's weight and hence the doctor is able to carry on the medical examination in a quick and precise way. **Rapid-Eco** is washable and made from materials of advanced technology. The Rapid-Eco gives doctors an easier and quicker way of working.



**Eco-Support** is the arm guide for ultrasound probes is made of steel and is fixed to the base of the Rapid-Eco. During the scan, the doctor is able to observe and analyses the data on the monitor, as the Eco-Support allows precise movement and hence avoids errors in the diagnosis.

Both products (**Rapid-Eco product code 5000** and **Eco-Support product code 5001**) can be purchased singularly upon request.

**DESIGNED, CERTIFIED AND AUTHORIZED BY Dr. Prof. Reinhard Graf**



### Additional Information

- Product code 5003 - HS 94029000 - size 27x51x80 cms - weight 7.3 KGS
- Alternative product : *Portable Graf's cradle product code 5002*

[CHECK PRICE ON LINE](#)

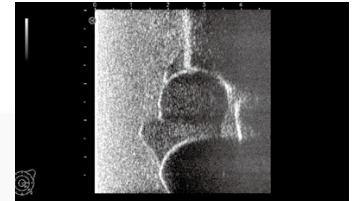
### Infant Hip Sonography Training Phantom

*World's first infant hip sonography phantom  
Best tool to teach Graf's method*

This phantom expands training opportunities for pediatricians, radiologists and orthopedists. Before working on real infants, trainees can repetitively practice on this phantom to become familiar with the examination procedures and key points. Using real ultrasound devices, trainees can learn key ultrasound landmarks to identify standard plane for Graf's classification. This is a foundation to acquire skills in handling and positioning of the baby as well as correct positioning of the transducer.



*Product  
Supervision  
Univ. Prof., h.c.,  
Reinhard Graf, M.D.*



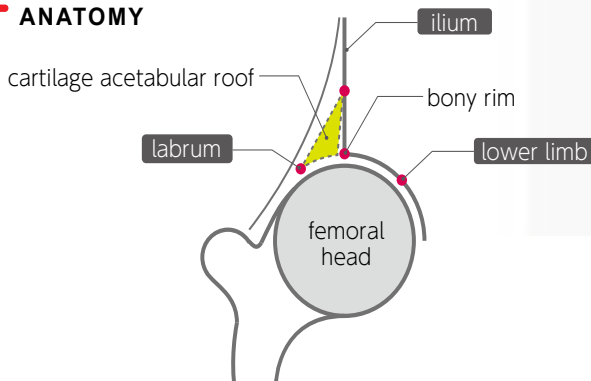
#### FEATURES

- 1 | The market's only training phantom for hip sonography on a full body manikin of 6-week-old infant
- 2 | Bilateral hips for examination
- 3 | Facilitate anatomical understanding
- 4 | Movable arms to practice supporting and repositioning of the infant

#### SKILLS

- | Setting and preparation for hip sonography
- | Changing the position of the infant
- | Communication and interaction with infant's guardian
- | Correct use and positioning of the transducer
- | Recognition of landmarks for hip sonography
- | Visualization of standard, anterior and posterior planes
- | Interpretation and morphological classification of the sonogram

#### ANATOMY



#### KEY LANDMARKS

- | chondro-osseous junction
- | femoral head
- | synovial membrane
- | joint capsule
- | acetabular labrum
- | cartilaginous portion of the acetabular roof
- | bony promontory of the superior bony acetabular rim
- | lower margin of the ilium
- | standard plane

#### Additional Information

- Size: W55 x D25 x H13 cm / W21.6 x D9.8 x H5.1 in - Weight: 3kg / 6.6lbs
- Materials: Polyurethane elastomer Latex free
- Set includes: 1x ultrasound infant phantom, 1x talcum powder, 1x storage case, 1x instruction manual

[CHECK PRICE ONLINE](#)